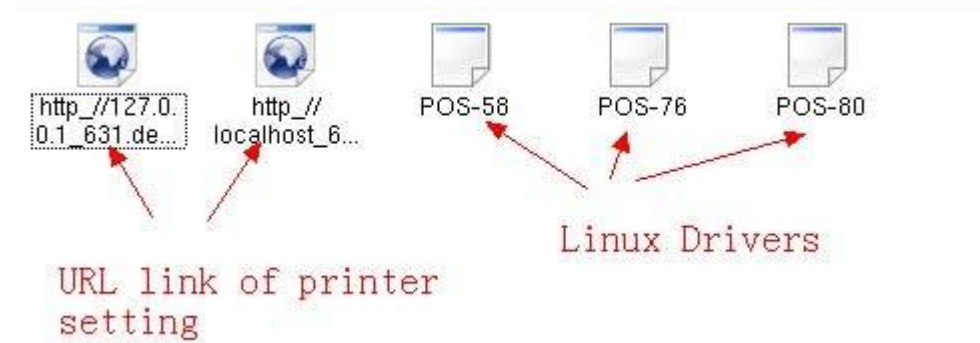




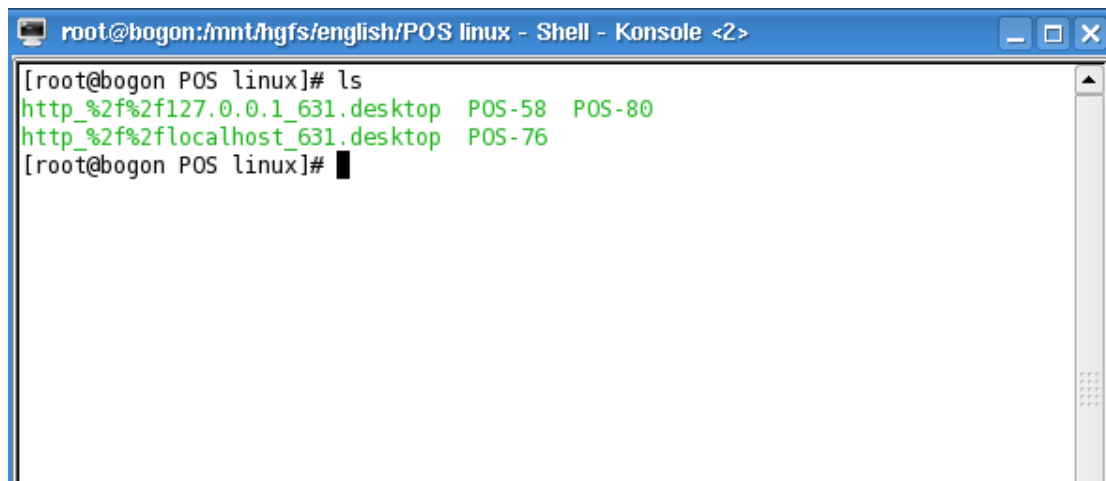
Instructions to install Linux printer driver

The Printer Driver Linux Installation Method

1 、 All the files will be in an empty folder after driver decompression, such as picture



2 、 Press F4 or using start menu to go into the terminal program, then input `ls`, and press Enter, such show as in Picture 2, (if different, using `CD` order to go into the folder then input `ls` and press Enter.



3、Driver Installation(./POS-80) show as below picture

```
jxaf@jxaf-virtual-machine: ~/Desktop/Linux Driver/POS-80
File Edit View Search Terminal Help
-----
Models included:
    POS-80

Searching for ServerRoot, ServerBin, and DataDir tags in /etc/cups/cupsd.conf
ServerBin tag not present in cupsd.conf - using default
DataDir tag not present in cupsd.conf - using default

ServerRoot =
ServerBin =
DataDir =

Restarting CUPS
[....] Stopping cups (via systemctl): cups.serviceWarning: Stopping cups.service, but i
t can still be activated by:
  cups.path
  cups.socket
. ok
[ ok ] Starting cups (via systemctl): cups.service.

Go to http://localhost:631, or http://127.0.0.1:631 to manage your printer please!
jxaf@jxaf-virtual-machine:~/Desktop/Linux Driver/POS-80$
```

Driver Installation finished

- 4、Printer setting(1. Inputting <http://localhost:631> or <http://127.0.0.1:631> to browser,
2. Opening the URL link which settled by the printer(remark: alternative)



Add New Printer

Name:

(May contain any printable characters except "/", "#", and space)

Location:

(Human-readable location such as "Lab 1")

Description:

(Human-readable description such as "HP LaserJet with Duplexer")

Continue

Next

Printer name
(necessary)

5. Choose interface as below:

Device for POS-80

Device:

AppSocket/HP JetDirect
AppSocket/HP JetDirect
Backend Error Handler
Internet Printing Protocol (http)
Internet Printing Protocol (ipp)
LPD/LPR Host or Printer
LPD/LPR Host or Printer
LPT #1
Parallel Port #1
Parallel Port #1 (CANON)
Parallel Port #1 (EPSON)

Lan

Parallel

Device for POS-80

Device:

AppSocket/HP JetDirect
SCSI Printer
Serial Port #1
Serial Port #2
ThinPrint Gateway Printer for VMware
ThinPrint Printer for VMware
Unknown USB #1
USB Printer #1 (Bidi support)
USB Printer #2 (Bidi support)
USB Printer #3 (Bidi support)
USB Printer #4 (Bidi support)

Serial

USB port will be showed
only when the printer
connect with PC

The Copyright

logo are the trademark property of Easy Soft
ts Reserved.

6、 Choose LAN port show as below picture

Device URI for POS-80

Device URI:

Examples:

- http://hostname:631/ipp/
http://hostname:631/ipp/port1
- ipp://hostname/ipp/
ipp://hostname/ipp/port1
- lpd://hostname/queue
- socket://hostname
socket://hostname:9100

See **"Network Printers"** for the correct URI to use with your printer.

Make/Manufacturer for POS-80

Make:

Continue

Or Provide a PPD File:

Socket://+IP+:+Port No.

There is no this item when installation first time, just can be chosen after first time installation

Model/Driver for POS-80

Model: **POS-80 (en)**

Choose Printer Model

Or Provide a PPD File:

Add Printer Next

Authorization Dialog

You need to supply a username and a password to access this site.

Site: **CUPS at 127.0.0.1**

Username:

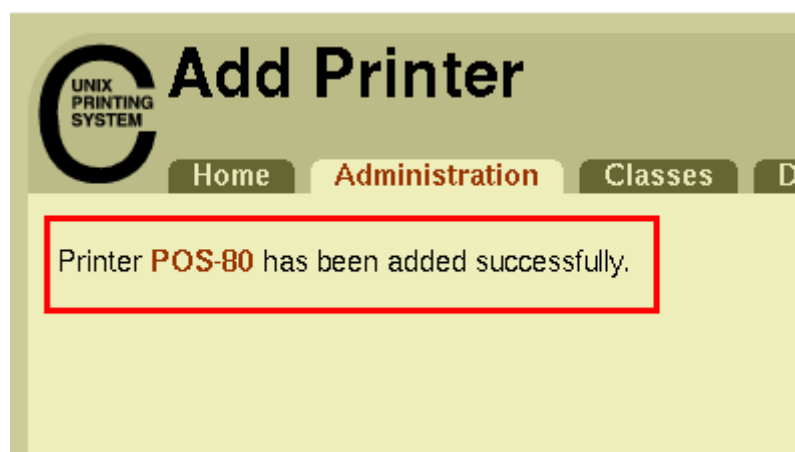
Password:

Keep password ☐

OK Cancel

Next

7、Adding printer successful if below picture appear



Coming below page automatically later, this page is printer parameter setting, can the default configuration, also can be chose according to need as below picture:

POS-80: General

Media Size:

80mm x 297mm

Set Printer Options

POS-80: Device Settings

Cash Drawer:

Cash Drawer #1 Before Printing

Blank space at page's end:

Do not print

Feed distance after print:

feed 30mm

Cutting:

Cut at the end of page

Beeper:

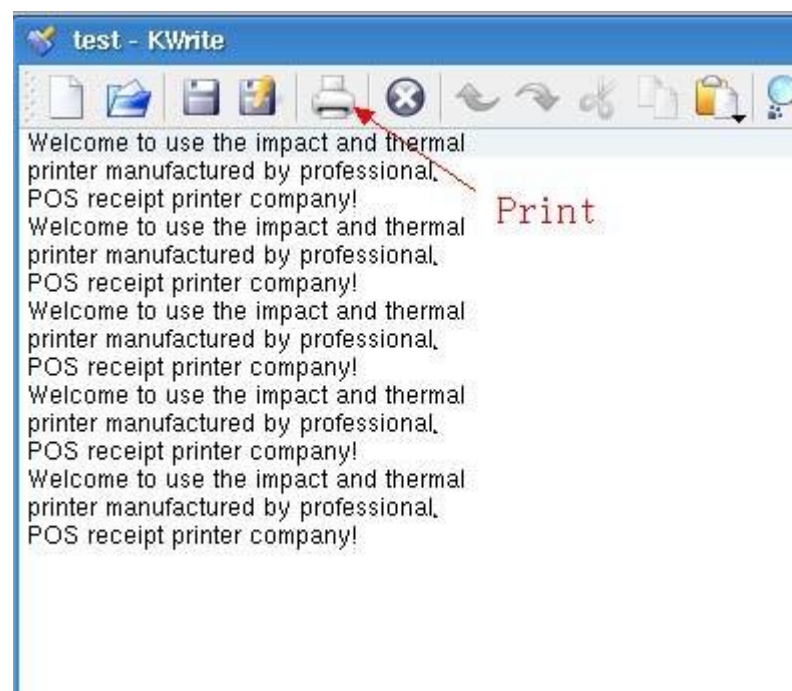
Beep before every page

NV Logo:

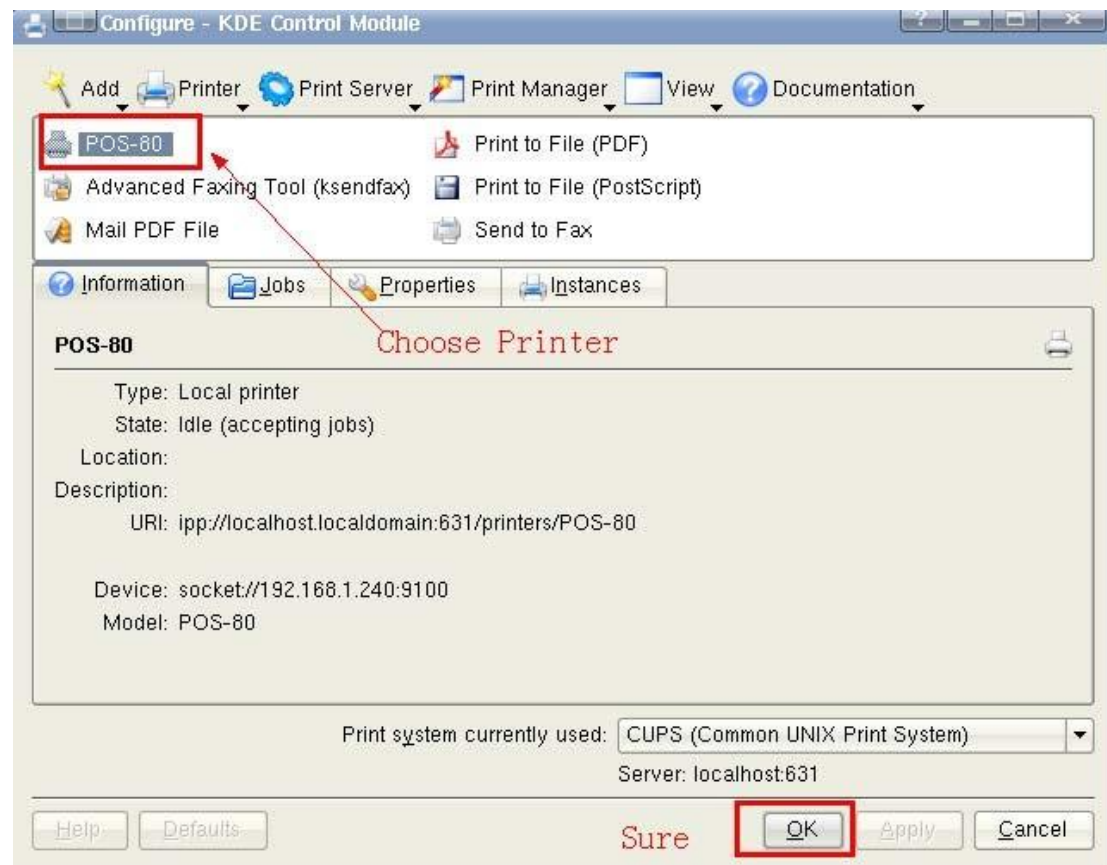
Do not print NV Logo

Set Printer Options

8、Printing test.



Choose the printer which was installed just now.



< End >